

Falling Film complete installation

Specifications

Brand	Falling Film
Type	complete installation
Product type	Falling Film
Capacité kW	21,1*
Capacity Tons	6,0*
Réfrigérant	Freon
Pump	✓
Sizes	Falling film: 2300x1110x2550 mm (LxWxH) Bitzer set: 2300x900x1050 mm (LxWxH)
Compressor(s) type & model	1x Bitzer 4CC-6.2Y-40S
Remarks	Y.o.b. 2013
Remarks	*Capacity based on an evaporating temperature of -5°C.
Stock	1



Description

Used Falling Film complete installation

Complete Falling film installation with a compressor set, condenser and pumps. The falling film has 3 plates and a container with 2 compartments. Further the falling film has 2 Pomac B.V. circulation pumps with a capacity of 3,8 m³/h and 1 Grundfos CHI2-40 A-W-G-BQQE water pump with a capacity of 2,5 m³/h.

Plate size: 950x1450 mm (WxH).
Container compartment 1: 471 dm³
Container compartment 2: 196 dm³

Bitzer compressor unit on Freon. Complete with a Bitzer 4CC-6.2Y-40S semi-hermetic reciprocating compressor, Bitzer F300H liquid receiver with a volume of 30 liter,

AC&R S-7063-CE suction accumulator,, liquid line filter drier, pressure and safety switches/gauges and a control cabinet with a Vacon NXL00235C5 frequency converter and a ALFA 31DP thermostate. The compressor has a displacement of 32,5 m³/h at 50 Hz and 39,2 m³/h at 60 Hz.

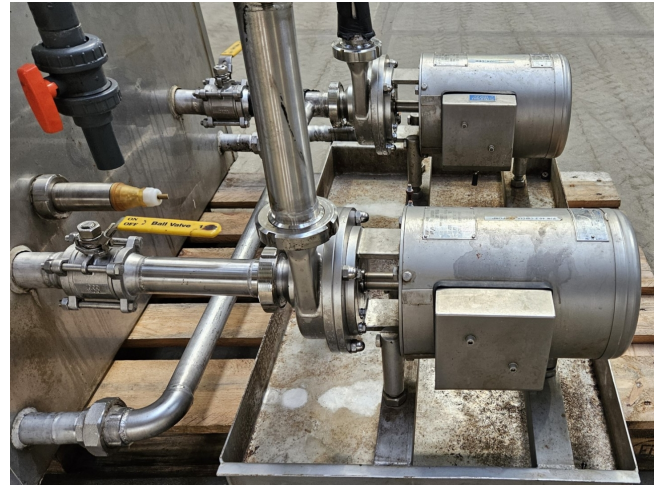
Further the set comes with a suitable Guntner condenser with 3 fans and an Ecowater systems dual tank water softener. Complete with a Grundfos CR3-19 A-A-A-E-HQQE water pump.

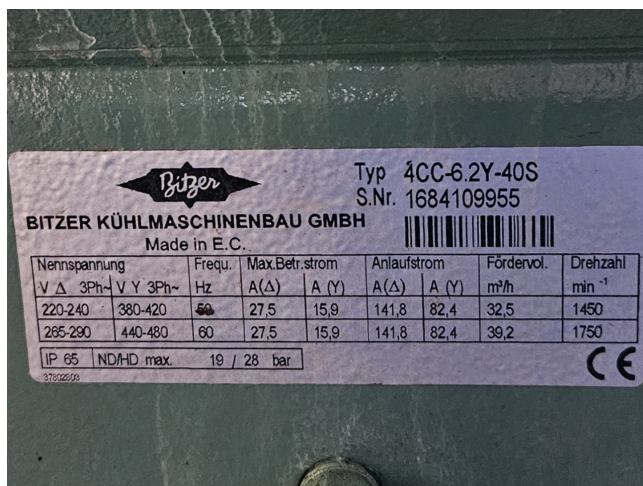
If you want more information or have questions please feel free to contact us!

*Why choose for HOSBV? We are not only the largest used refrigeration specialist in Europe, but also, we deliver all equipment including an extensive test, warranty and industrial cleaning. *Optional we can also perform a new paint job and arrange the logistics.









Typ 4CC-6.2Y-40S
S.Nr. 1684109955

BITZER KÜHLMASCHINENBAU GMBH
Made in E.C.

Nennspannung		Frequ.	Max.Betr.strom		Anlaufstrom		Fördervol.	Drehzahl
V Δ	3Ph~	V Y	3Ph~	Hz	A(Δ)	A(Y)	m³/h	min ⁻¹
220-240	380-420	50	27,5	15,9	141,8	82,4	32,5	1450
265-290	440-480	60	27,5	15,9	141,8	82,4	39,2	1750

IP 65 ND/HD max. 19 / 28 bar

370226/09

CE

